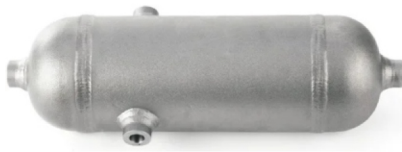
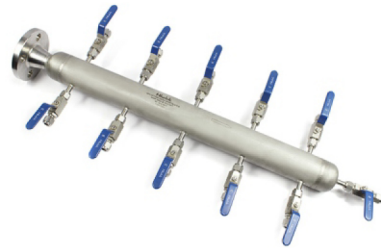


CONDENSATE / SEAL POT (CP)



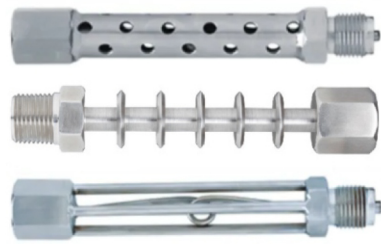
End Connection	: FPT x SW
Pipe Size	: 1.5" to 4" Sch 40 to Sch 160
Type	: 3 Way / 4 Way
Female Pipe Thread Size (FPT)	: 1/4" to 2" NPT Female (Taper) Threads (BSPP / BSPT / ISO / Metric or Any Other Threads on Request)
Socket Weld Pipe Size (SW)	: 1/4" to 2" NB
Drain Plugs	: Drain Plugs Provided optionally
MOC	: SS316, 304 / Alloy 400, 600, C276 etc..
Length of Pipe / Pipe Schedule	to be Specified

AIR HEADER (AIR MANIFOLD)



Application	: To Distribute Compressed Air
End Connection	: Flange End / Threaded, Inlet / Out Let
MOC	: CS GI With SS or Brass Valve / Complete SS
Type	: Multiple outlet (As per Customer Requirements)
Female Pipe Thread Size (FPT)	: 1/4" to 2" NPT Female (Taper) Threads (BSPP / BSPT / ISO / Metric or Any Other Threads on Request)
Test Pressure	: Standard 20 bar (High Pressure Test offered)
Opposite sides outlet pattern	: Parallel or Zig Zag
Distance Between two Outlet	: To Specified by Customer

COOLING TOWER (CLT)



Application	: Used for Protect Pressure Instruments form High Temperature
Type	: CLT1 = Perforated Type : CLT2 = Fin Type : CLT3 = Capillary Type
Female Pipe Thread Size (FPT)	: 1/4" to 1/2" NPT Female (Taper) Threads (BSPP / BSPT / ISO / Metric or Any Other Threads on Request)
Pressure Rating	: 10000 PSI
MOC	: SS 304 / SS 316
Length	: To Specified by Customer

FABRICATED THERMOWELL THREADED



Application	: Thermowells are used to guard Temperature Sensor/ Gauges against damage from excessive pressure, material velocity and corrosion
Type	: Fabricated Type Threaded
Connection	: Threads As per Customer Requirements 1/4" to 1" NPT / BSP or Any Other Threads on Request
MOC	: SS316, 304, 310 / Inconel 600 etc...
For More Details Please Refer Our Detailed Product Catalogue ask for Catalogue or Download for our Web Site	

BAR STOCK THERMOWELL



Application	: Thermowells are used to guard Temperature Sensor/ Gauges against damage from excessive pressure, material velocity and corrosion
Type	: Threaded Bar Stock
Connection	: Threads As per Customer Requirements 1/4" to 1" NPT / BSP or Any Other Threads on Request
MOC	: SS316, 304, 310 / Inconel 600 etc...
For More Details Please Refer Our Detailed Product Catalogue ask for Catalogue or Download for our Web Site	

THERMOWELL FLANGED



Application	: Thermowells are used to guard Temperature Sensor/ Gauges against damage from excessive pressure, material velocity and corrosion
Type	: Fabricated / Bar stock Flanged Thermowell
Connection	: Threads As per Customer Requirements 1/4" to 1" NPT / BSP or Any Other Threads on Request
MOC	: SS316, 304, 310 / Inconel 600 etc...
For More Details Please Refer Our Detailed Product Catalogue. Ask for Catalogue or Download from our Web Site	