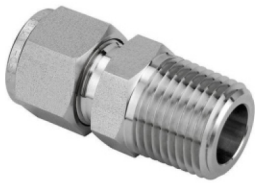


MALE CONNECTOR (MC)



End Connection	: TOD X MPT
Tube OD Size (TOD)	: From 1/8" OD to 2" OD (Fractional) From 3mm OD to 38mm OD (Metric)
Male Pipe Thread Size (MPT)	: 1/8" to 2" NPT Male (Taper) Threads (BSPP / BSPT / ISO / Metric or Any Other Threads on Request)
Type	: Double ferrule design with Nut
MOC	: SS316, 304 / Alloy 400, 600, C276 etc..
Model Code (*)	: MC - TOD - MPT - MOC

MALE ELBOW 90 DEG (ME)



End Connection	: TOD X MPT
Tube OD Size (TOD)	: From 1/8" OD to 1.5" OD (Fractional) From 3mm OD to 38mm OD (Metric)
Male Pipe Thread Size (MPT)	: 1/8" to 1.5" NPT Male (Taper) Threads (BSPP / BSPT / ISO / Metric or Any Other Threads on Request)
Type	: Double ferrule design with Nut
MOC	: SS316, 304 / Alloy 400, 600, C276 etc..
Model Code (*)	: ME - TOD - MPT - MOC

MALE ELBOW 45 DEG (ME45)



End Connection	: TOD X MPT
Tube OD Size (TOD)	: From 1/8" OD to 1.5" OD (Fractional) From 3mm OD to 38mm OD (Metric)
Male Pipe Thread Size (MPT)	: 1/8" to 1.5" NPT Male (Taper) Threads (BSPP / BSPT / ISO / Metric or Any Other Threads on Request)
Type	: Double ferrule design with Nut
MOC	: SS316, 304 / Alloy 400, 600, C276 etc..
Model Code (*)	: ME45- TOD - MPT - MOC

MALE RUN TEE (MRT)



End Connection	: TOD X MPT x TOD
Tube OD Size (TOD)	: From 1/8" OD to 1.5" OD (Fractional) From 3mm OD to 38mm OD (Metric)
Male Pipe Thread Size (MPT)	: 1/8" to 1.5" NPT Male (Taper) Threads (BSPP / BSPT / ISO / Metric or Any Other Threads on Request)
Type	: Double ferrule design with Nut
MOC	: SS316, 304 / Alloy 400, 600, C276 etc..
Model Code (*)	: MRT- TOD1 - MPT - TOD2 - MOC

MALE BRANCH TEE (MBT)



End Connection	: TOD X TOD X MPT
Tube OD Size (TOD)	: From 1/8" OD to 1.5" OD (Fractional) From 3mm OD to 38mm OD (Metric)
Male Pipe Thread Size (MPT)	: 1/8" to 1.5" NPT Male (Taper) Threads (BSPP / BSPT / ISO / Metric or Any Other Threads on Request)
Type	: Double ferrule design with Nut
MOC	: SS316, 304 / Alloy 400, 600, C276 etc..
Model Code (*)	: MBT- TOD1 - TOD2 - MPT - MOC

MALE BULKHEAD CONNECTOOR (MBH)



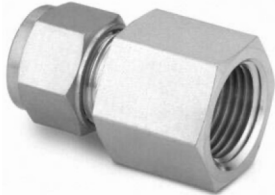
End Connection	: TOD X TOD x FPT
Tube OD Size (TOD)	: From 1/8" OD to 1.5" OD (Fractional) From 3mm OD to 38mm OD (Metric)
Male Pipe Thread Size (MPT)	: 1/8" to 1.5" NPT Female Threads (BSPP / BSPT / ISO / Metric or Any Other Threads on Request)
Type	: Double ferrule design with Nut
MOC	: SS316, 304 / Alloy 400, 600, C276 etc..
Model Code (*)	: MBH- TOD1 - FPT - MOC

MALE TUBE ADAPTOR(MTA)



End Connection	: TPE X MPT
Tube Plain End Size (TPE)	: From 1/8" OD to 2" OD (Fractional) From 3mm OD to 38mm OD (Metric)
Male Pipe Thread Size (MPT)	: 1/8" to 2" NPT Male (Taper) Threads (BSPP / BSPT / ISO / Metric or Any Other Threads on Request)
Type	: Tube plain end suitable for swaging ferrules
MOC	: SS316, 304 / Alloy 400, 600, C276 etc..
Model Code (*)	: MTA - TPE - MPT - MOC

FEMALE CONNECTOR (FC)



End Connection	: TOD X FPT
Tube OD Size (TOD)	: From 1/8" OD to 1.5" OD (Fractional) From 3mm OD to 38mm OD (Metric)
Female Pipe Thread Size (FPT)	: 1/8" to 1.5" NPT Female (Taper) Threads (BSPP / BSPT / ISO / Metric or Any Other Threads on Request)
Type	: Double ferrule design with Nut
MOC	: SS316, 304 / Alloy 400, 600, C276 etc..
Model Code (*)	: FC - TOD - FPT - MOC

FEMALE ELBOW 90 DEG (FE)



End Connection	: TOD X FPT
Tube OD Size (TOD)	: From 1/8" OD to 1.5" OD (Fractional) From 3mm OD to 38mm OD (Metric)
Female Pipe Thread Size (FPT)	: 1/8" to 1.5" NPT Female (Taper) Threads (BSPP / BSPT / ISO / Metric or Any Other Threads on Request)
Type	: Double ferrule design with Nut
MOC	: SS316, 304 / Alloy 400, 600, C276 etc..
Model Code (*)	: FE - TOD - FPT - MOC

FEMALE RUN TEE (FRT)



End Connection	: TOD X FPT x TOD
Tube OD Size (TOD)	: From 1/8" OD to 1.5" OD (Fractional) From 3mm OD to 38mm OD (Metric)
Female Pipe Thread Size (FPT)	: 1/8" to 1.5" NPT Female (Taper) Threads (BSPP / BSPT / ISO / Metric or Any Other Threads on Request)
Type	: Double ferrule design with Nut
MOC	: SS316, 304 / Alloy 400, 600, C276 etc..
Model Code (*)	: FRT- TOD1 - FPT - TOD2 - MOC

FEMALE BRANCH TEE (FBT)



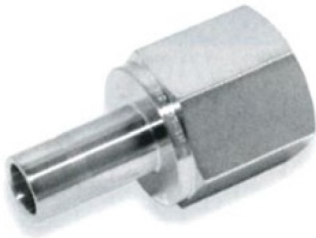
End Connection	: TOD X TOD X FPT
Tube OD Size (TOD)	: From 1/8" OD to 1.5" OD (Fractional) From 3mm OD to 38mm OD (Metric)
Female Pipe Thread Size (FPT)	: 1/8" to 1.5" NPT Female (Taper) Threads (BSPP / BSPT / ISO / Metric or Any Other Threads on Request)
Type	: Double ferrule design with Nut
MOC	: SS316, 304 / Alloy 400, 600, C276 etc..
Model Code (*)	: FBT- TOD1 - TOD2 - FPT - MOC

FEMALE BULKHEAD CONNECTOR (FBH)



End Connection	: TOD x FPT
Tube OD Size (TOD)	: From 1/8" OD to 1.5" OD (Fractional) From 3mm OD to 38mm OD (Metric)
Female Pipe Thread Size (FPT)	: 1/8" to 1.5" NPT Female Threads (BSPP / BSPT / ISO / Metric or Any Other Threads on Request)
Type	: Double ferrule design with Nut
MOC	: SS316, 304 / Alloy 400, 600, C276 etc..
Model Code (*)	: FBH - TOD - FPT - MOC

FEMALE TUBE ADAPTOR (FTA)



End Connection	: TPE X FPT
Tube Plain End Size (TPE)	: From 1/8" OD to 2" OD (Fractional) From 3mm OD to 38mm OD (Metric)
Female Pipe Thread Size (FPT)	: 1/8" to 2" NPT Female (Taper) Threads (BSPP / BSPT / ISO / Metric or Any Other Threads on Request)
Type	: Double ferrule design with Nut
MOC	: SS316, 304 / Alloy 400, 600, C276 etc..
Model Code (*)	: FTA - TPE - FNPT - MOC

UNION TUBE STRAIGHT(U)



End Connection	: TOD X TOD
Tube OD Size (TOD)	: From 1/8" OD to 1.5" OD (Fractional) From 3mm OD to 38mm OD (Metric)

REDUCING UNION OF ALL COMBINATION AVAILABLE

Type	: Double ferrule design with Nut
MOC	: SS316, 304 / Alloy 400, 600, C276 etc..
Model Code (*)	: U - TOD - TOD - MOC

ELBOW UNION 90 DEG (EU)



End Connection	: TOD X TOD
Tube OD Size (TOD)	: From 1/8" OD to 1.5" OD (Fractional) From 3mm OD to 38mm OD (Metric)

REDUCING UNION OF ALL COMBINATION AVAILABLE

Type	: Double ferrule design with Nut
MOC	: SS316, 304 / Alloy 400, 600, C276 etc..
Model Code (*)	: EU - TOD1 - TOD2 - MOC

TEE UNION 90 DEG (TU)



End Connection	: TOD X TOD X TOD
Tube OD Size (TOD)	: From 1/8" OD to 1.5" OD (Fractional) From 3mm OD to 38mm OD (Metric)

REDUCING UNION OF ALL COMBINATION AVAILABLE

Type	: Double ferrule design with Nut
MOC	: SS316, 304 / Alloy 400, 600, C276 etc..
Model Code (*)	: TU - TOD1 - TOD2 - TOD3 - MOC

CROSS UNION (CU)



End Connection	: TOD X TOD X TOD X TOD
Tube OD Size (TOD)	: From 1/8" OD to 1.5" OD (Fractional) From 3mm OD to 38mm OD (Metric)

REDUCING UNION OF ALL COMBINATION AVAILABLE

Type	: Double ferrule design with Nut
MOC	: SS316, 304 / Alloy 400, 600, C276 etc..
Model Code (*)	: CU - TOD1 - TOD2 - TOD3 TOD4 - MOC

BULK HEAD UNION TUBE(BHU)



End Connection	: TOD X TOD
Tube OD Size (TOD)	: From 1/8" OD to 1.5" OD (Fractional) From 3mm OD to 38mm OD (Metric)

REDUCING UNION OF ALL COMBINATION AVAILABLE

Type	: Double ferrule design with Nut
MOC	: SS316, 304 / Alloy 400, 600, C276 etc..
Model Code (*)	: BHU - TOD1 - TOD2 - MOC

REDUCER TUBE (RT)



End Connection	: TOD X TPE
Tube OD Size (TOD)	: From 1/8" OD to 2" OD (Fractional) From 3mm OD to 38mm OD (Metric)
Tube Plain End Size (TPE)	: From 1/8" OD to 2" OD (Fractional) From 3mm OD to 38mm OD (Metric)
Type	: Tube Plain End suitable for Swaging ferrules
MOC	: SS316, 304 / Alloy 400, 600, C276 etc..
Model Code (*)	: RT - TOD - TPE - MOC

PIPE BUTT WELD CONNECTOR (PBWC)



End Connection	: TOD X PBW
Tube OD Size (TOD)	: From 1/8" OD to 2" OD (Fractional) From 3mm OD to 38mm OD (Metric)
Pipe Butt Weld End Size (PBW)	: From 1/8" NB to 2" NB
Type	: Double ferrule design with nut
MOC	: SS316, 304 / Alloy 400, 600, C276 etc..
Model Code (*)	: PBWC - TOD - PBW - MOC

END CLOSURE FOR TUBE (ECT)



End Connection	: TOD
Tube OD Size (TOD)	: From 1/8" OD to 1.5" OD (Fractional) From 3mm OD to 38mm OD (Metric)
Type	: Double ferrule design with Nut
MOC	: SS316, 304 / Alloy 400, 600, C276 etc..
Model Code (*)	: ECT - TOD - MOC

END CLOSURE FOR FITTINGS (ECF)



End Connection	: TOD
Tube OD Size (TOD)	: From 1/8" OD to 1.5" OD (Fractional) From 3mm OD to 38mm OD (Metric)
Type	: Double ferrule design with Nut
MOC	: SS316, 304 / Alloy 400, 600, C276 etc..
Model Code (*)	: ECF - TOD - MOC

SPARE NUT (SN)



End Connection	: TOD
Tube OD Size (TOD)	: From 1/8" OD to 1.5" OD (Fractional) From 3mm OD to 38mm OD (Metric)
Type	: Double ferrule design with Nut
MOC	: SS316, 304 / Alloy 400, 600, C276 etc..
Model Code (*)	: SN - TOD - MOC

SPARE FERRULE SET (SF)



End Connection	: TOD
Tube OD Size (TOD)	: From 1/8" OD to 1.5" OD (Fractional) From 3mm OD to 38mm OD (Metric)
Type	: Double ferrule design with Nut
MOC	: SS316, 304 / Alloy 400, 600, C276 etc..
Model Code (*)	: SF - TOD - MOC